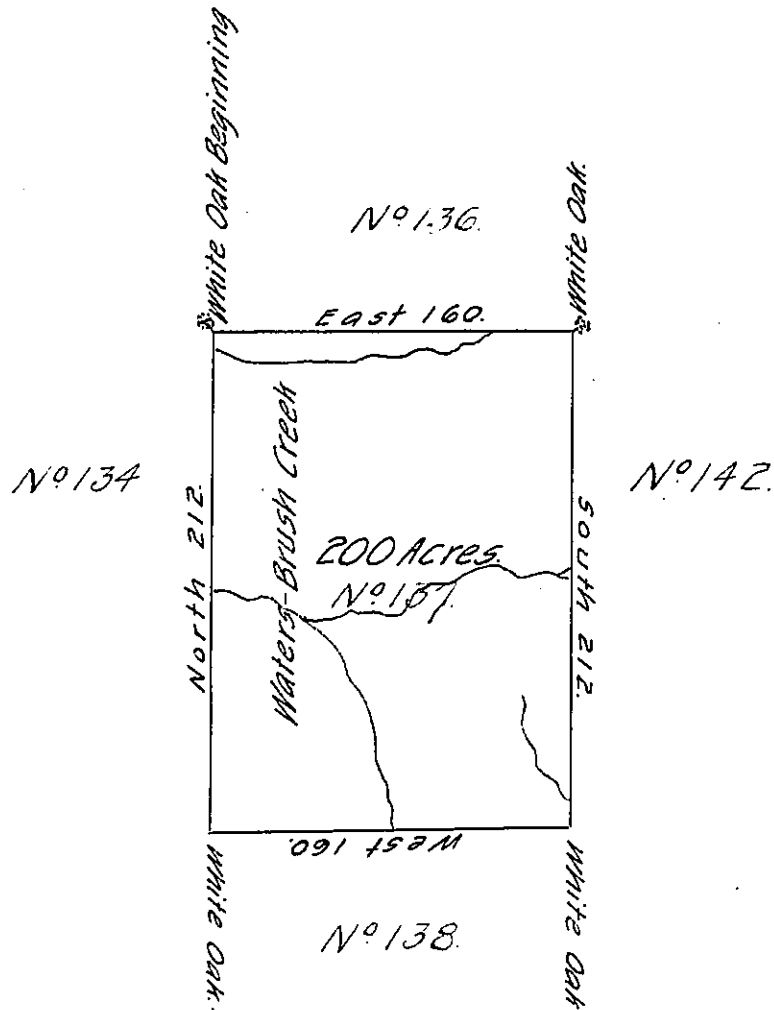


✓

FORM NO. 1.



The above is a Draught of a Survey made in the Month of July 1785, In Pursuance of instructions from the Surveyor General Dated January 1785. Situate on the North Side of the Ohio River, on the Waters of Brush Creek, in District No 2. Containing two Hundred Acres. With the Allowance of 6^{per} Cent.

Danl Leet, D.S.

To John Lukens, Esqr. Surv^r. Genl

IN TESTIMONY that the above is a copy of the original remaining on file in the Department of Internal Affairs of Pennsylvania, made conformably to an Act of Assembly approved the 16th day of February, 1833, I have hereunto set my Hand and caused the Seal of said Department to be affixed at Harrisburg, this seventeenth day of April 1906.

Geo D Brown
Secretary of Internal Affairs.

74.